

# MAYOR LIGHTFOOT'S FRAMEWORK FOR MENTAL HEALTH EQUITY

## PILLARS

01

Expansion of publicly-funded outpatient mental health (MH) services in communities of high need.

02

Coordination of Trauma-Informed victim services for persons impacted by violence.

03

Expansion of crisis prevention and response programs for people who struggle with serious mental illness (SMI) and complex needs.

04

City-level systems coordination efforts to ensure that every resident has support and resources to access care when and where they need it.

## ACCOMPLISHMENTS in 2021

TICC

**27,452 UNDUPLICATED PERSONS SERVED**

102,303 total service units delivered to youth & adults (72% received by adults & 28% received by youth (0-17))

ACT/CST

**786 TOTAL UNDUPLICATED CLIENTS RECEIVED SERVICES**

THRESHOLDS:  
THE JAIL PROJECT

**57 CLIENTS ENTERED THE PROGRAM**

NAMI

**11,362 CALLS RECEIVED**

UIC: WALK-IN  
CRISIS CENTER

**6,893 TOTAL CLIENTS THAT RECEIVED WALK-IN SERVICES**

THE NIGHT  
MINISTRY: CTA  
OUTREACH

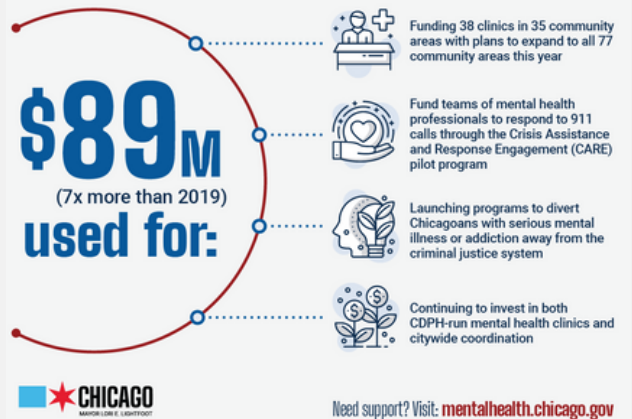
**12,498 CLIENT OUTREACH EFFORTS**

# MAYOR LIGHTFOOT'S 2022 MENTAL HEALTH BUDGET PLAN

Seven-fold increase in Mental Health funding since 2019 - \$89 million in mental health, of which \$52 million in new funding

- Expand Trauma-Informed Centers of Care City-Wide
- Increase funding for CARE Pilot
- Launch 60-Unit Stabilization Center
- Continue to invest in CDPH-run Mental Health Centers and Citywide coordination

## CHICAGO'S INVESTMENT IN MENTAL HEALTH



## CDPH 2022 MENTAL HEALTH DELEGATES

### TRAUMA-INFORMED CENTERS OF CARE

- Access Community Health Network
- Ada S. McKinley Community Services, Inc
- Alivio Medical Center
- Alternatives, Inc
- Apna Ghar, Inc/Hamdard Center
- Asian Human Services Family Health Center
- Asian Human Services, Inc
- Aunt Martha's Health and Wellness
- Bobby E. Wright/Acclivus
- BUILD, Inc
- Carolina Therapeutic Services, Inc (CTS Health)
- Catholic Charities
- Chicago Family Health Center
- Chinese American Service League, Inc (CASL)
- Christian Community Health Center (CCHC)
- Community Counseling Centers of Chicago (C4)
- Enlace Chicago
- Envision Unlimited
- Erie Family Health Centers
- Erie Neighborhood House
- Esperanza Health Centers
- Friend Family Health Center
- Gads Hill Center
- Habilitative Systems, Inc (HSI)
- Healthcare Alternative Systems (HAS)
- Heartland Alliance Health
- Howard Brown Health/Thresholds
- Infant Welfare Society of Chicago
- Inner-City Muslim Action (IMAN)
- Lakeview Pantry
- Lawndale Christian Health Center/I AM ABLE
- Lutheran Social Services Illinois (LSSI)
- Metropolitan Family Service (MFS)
- Midwest Asian Health Association (MAHA)
- PCC Community Wellness Center
- Pilsen-Little Village Community MH Center
- PrimeCare Health
- Saint Anthony Hospital
- Sinai Health System
- St. Bernard Hospital
- TCA Health
- Trilogy/Heartland Health Centers
- UIC Mile Square Health Center
- YWCA Metropolitan Chicago

### ACT/CST EXPANSION

- Healthcare Alternatives Systems (HAS)
- Trilogy
- Thresholds
- HRDI

### OTHER MENTAL HEALTH PROJECTS

- The Night Ministry: CTA Outreach
- NAMI Chicago: 311 Connection
- UIC Miles Square Health Center: Walk-In Psychiatric Services